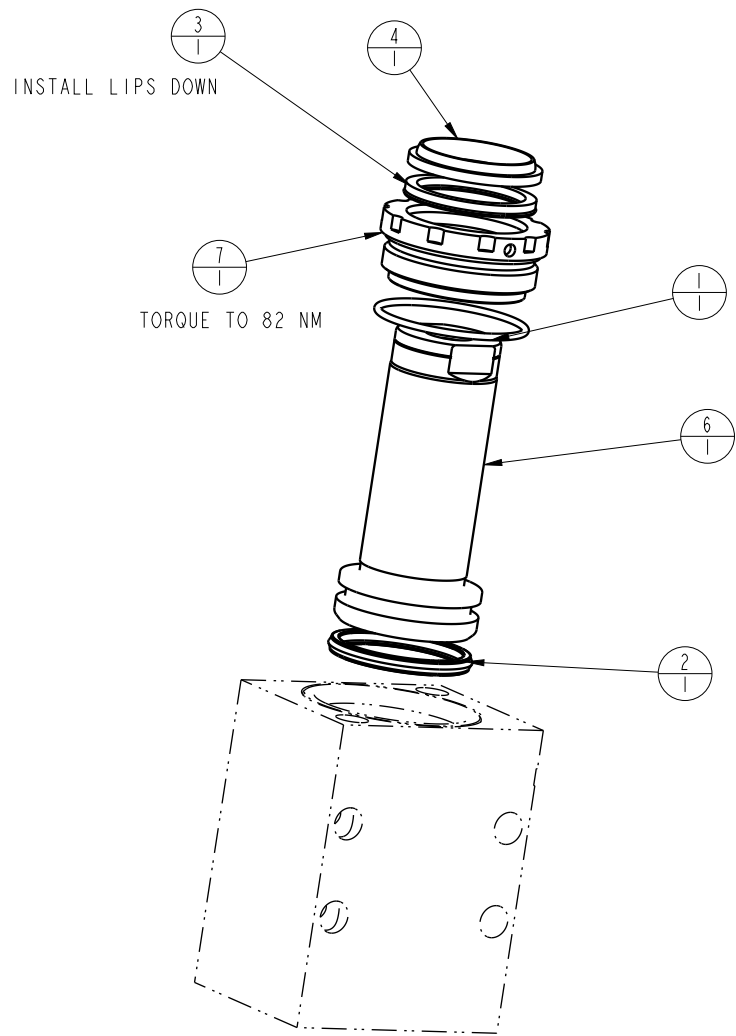


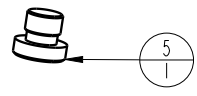
1				2	
NO	QTY	PART NO	DESCRIPTION	STD SEAL KIT	FKM SEAL KIT
1	1	39001013	O-RING, (-029)	X	39012014
2	1	39011031	SEAL, CROWN, 1-5/16x1-1/2x5/32	X	39V11031
3	1	39011048	SEAL, LL, (1-1/8 X 1/8 X 1/8 X 1-3/8)	X	39012007
4	1	39050020	WIPER, SNAP-IN, (1-1/8)	X	X
5	1	43068004	PLUG, 1/8 BSPP		
6	1	48011505	PISTON, CYL, 39.9 KN, 38.1 STRK		
7	1	82031501	GLAND, CYL, 8800 & 39.9 KN		
N/A	N/A	46000034	KIT, SEAL, BB, 39,9KN, DA	NOTED	N/A
N/A	N/A	6V200214	KIT, SEAL, BB, 39,9KN, DA, FKM	N/A	NOTED


C 1



- 2. ALL SEALS, O-RINGS, AND WIPERS ARE INCLUDED IN THE STANDARD OR FKM SEAL KIT.
- 1. APPLY LUBRICANT TO ALL SEALS PRIOR TO ASSEMBLY (DO NOT USE SILICONE TYPE LUBRICANTS).

NOTE:



PARTS LIST	 VEKTEK, INC. 1334 E. SIXTH AVE. P.O. BOX 625 EMPORIA, KS. 66801 U.S.A.								
	PARTS LIST, BB, 39,9 KN, DA								
ASSEMBLIES AFFECTED	<table border="1"> <tr> <td>SIZE</td> <td>MPLV2090</td> <td>REV</td> <td>C</td> </tr> <tr> <td>A</td> <td></td> <td></td> <td></td> </tr> </table>	SIZE	MPLV2090	REV	C	A			
SIZE	MPLV2090	REV	C						
A									

C	4627	RELEASE	RLK	2/23/22
REV	IN ACCORDANCE WITH ECN	EFFECTIVE DATE	REVISED BY	DATE
DRW BY: ROMINE	DRAWING STATUS: Released PRODUCTION APPROVED FOR RELEASED STATUS ONLY			
DATE: 04-10-08				

SHEET 1 OF 1